

# INSTALLATION GUIDELINES

*Note: Always use a professional installer such as a kitchen fitter or plumber*

## BEFORE YOU BEGIN

**WARNING:** RISK OF PERSONAL INJURY, as metal surfaces are sharp and can cause serious injury. Use gloves and handle the sink carefully especially when unpacking/unboxing.

ENSURE THAT YOU HAVE THE CORRECT SINK AND THAT THE SINK IS NOT DAMAGED. DAMAGE CLAIMS WILL NOT BE ENTERTAINED OR ACCEPTED IF AN ATTEMPT HAS BEEN MADE TO FIT THE SINK.  
ENSURE THAT WATER SUPPLY HAS BEEN SWITCHED OFF PRIOR TO REMOVING OLD SINKS OR FITTING NEW. OBSERVE ALL LOCAL PLUMBING AND BUILDING RULES AND REGULATIONS.

## RECOMMENDED TOOLS AND MATERIALS

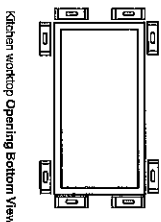
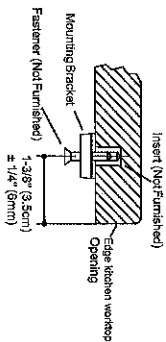
- Pencil and Marker
- Measuring Tape
- Drill
- Router and Jigsaw
- Safety Glasses and Safety Gloves
- Appropriate Screwdrivers
- Appropriate Sealant and/or Mastic

## UNDERMOUNT SINK INSTALLATION

**WE STRONGLY RECOMMEND THAT UNDERMOUNT SINK INSTALLATIONS ARE CARRIED OUT SOLELY BY PROFESSIONALS SUCH AS EXPERIENCED KITCHEN FITTERS, WORKTOP FABRICATORS ETC.**

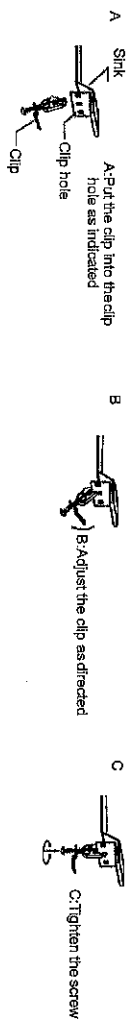
Using either the template if supplied (or cut out measurement on [www.ukhomestyle.com](http://www.ukhomestyle.com)) or CNC / DXF file. Cut the hole carefully on your SOLID SURFACE worktop, please note only SOLID surface work tops such as granite, wood, acrylic can be used for undermount sink applications. Your particular style of sink and material will pre-determine the correct fixing of your sink, your work surface supplier will be able to advise accordingly.

Fixing of the undermount clips if required should be like so:



## INSET SINK INSTALLATION

Using either the template if supplied (or cut out measurement on [www.ukhomestyle.com](http://www.ukhomestyle.com)) or the sink as the template mark the sink dimensions on your work surface, if using your sink as the template remember to calculate a small distance (say 5mm or so) in from the outside line of your sink guideline.



- If sink clips are used on your style of sink please ensure the sink clips will be able to be used correctly before cutting the sink hole (too big a hole will make the fitting of your sink difficult, too small a hole will not allow the sink to fit correctly. Some styles of sink can be used as both UNDERMOUNT OR INSET, sinks that can be used in this manner may need some adjustment to the underside of your work surface in order that the overflow can be fitted and positioned correctly, this is a specialist job and we would recommend that professional advice is sought prior to undertaking adaptation to the underside of the work surface.
- Check all measurements carefully PRIOR to cutting your work surface. Cut the required hole in your work surface carefully using appropriate router or jigsaw.
- Carefully remove dust and debris from the work surface and surrounding area. Ensure the cut area (if porous) is sealed with an appropriate sealant or waterproof surface to protect from water ingress. Allow to dry before fitting your new sink.
- Should inset fitting clips be supplied for your style of sink please fit these to the sink before fitting your sink, it may prove useful to also fit your waste and overflow now before fitting the sink carefully into the cut-out.
- Should your sink not include or not be designed to have a "rubber seal" please use a high quality waterproof mastic or sealant to the underside of the sink to ensure a good watertight seal. Once fitted to the work surface, apply weight or tighten the sink clips (if required and supplied) to allow excess sealant to seep from the underside of the sink and on to the work surface. Ensure that your sink is positioned correctly and wipe off any excessive sealant or mastic from the surrounding surface and sink to ensure fully clean.

**PLEASE ENSURE YOUR SINK IS POSITIONED CORRECTLY PRIOR TO THE CURING PHASE OF YOUR SEALANT/MASTIC**, the sink will NOT be able to be moved once the sealant/mastic has cured. We would recommend clamping or adding weight to the top of your sink as the sealant cures to ensure a flush finish to your work surface. Once your sink is fully cured and secure make all waste and overflow connections and fit your tap correctly according to the fitting recommendation of the tap manufacturer.

Please check all connections for water tightness prior to switching on the water supply to your tap and pay particular attention to the connections of all wastes/ plumbing kits.